

Be-Zr (Beryllium-Zirconium)

H. Okamoto

The Be-Zr phase diagram in [Massalski2] (solid lines in Fig. 1) was redrawn from [1987Oka]. The liquidus boundaries were speculative.

[2006Tok] determined the Be-Zr phase diagram based on ab initio calculations (dashed lines in Fig. 1). The result of [2006Tok] appears to support the general trend of the liquidus boundary in [1987Oka], but experimental phase boundary data are needed for corroboration.

References

- 1987Oka:** H. Okamoto, L.E. Tanner, and J.P. Abriata, The Be-Zr (Beryllium-Zirconium) System, *Phase Diagrams of Binary Beryllium Alloys*, H. Okamoto and L.E. Tanner, Eds., ASM International, Metals Park, OH, 1987, p 223-229
- 2006Tok:** T. Tokunaga, H. Ohtani, and M. Hasebe, Thermodynamic Analysis of the Zr-Be System Using Thermochemical Properties base on Ab Initio Calculations, *CALPHAD*, 2006, **30**, p 201-208

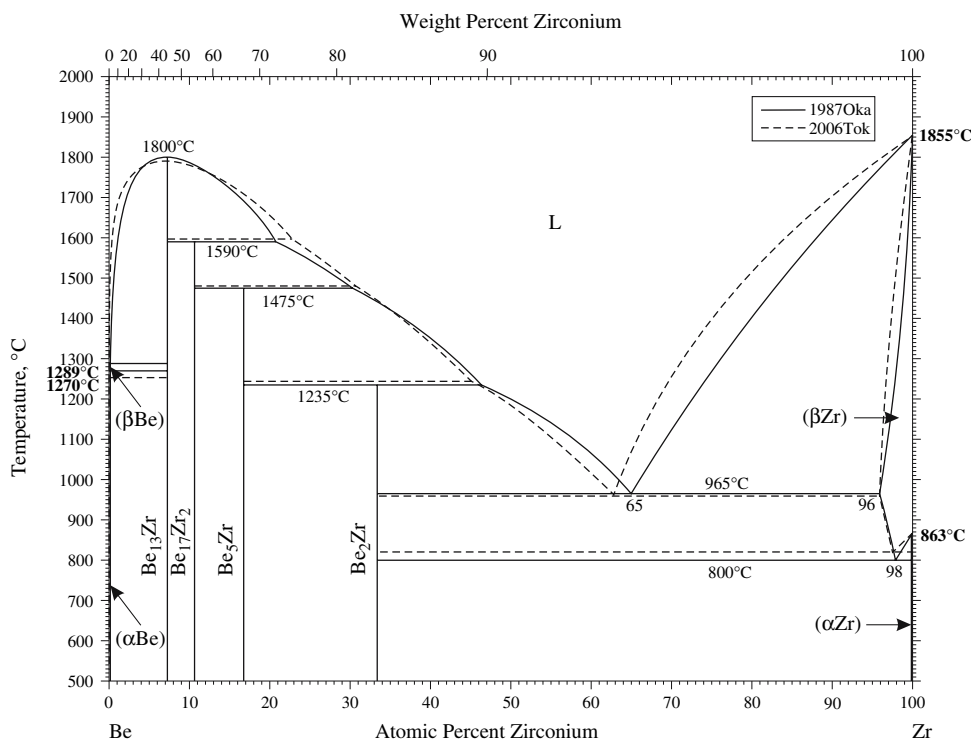


Fig. 1 Be-Zr phase diagram